



# The Beyontec Suite

Everything you need. Right where you need it.

[www.beyontec.com](http://www.beyontec.com)

# Fully Developed

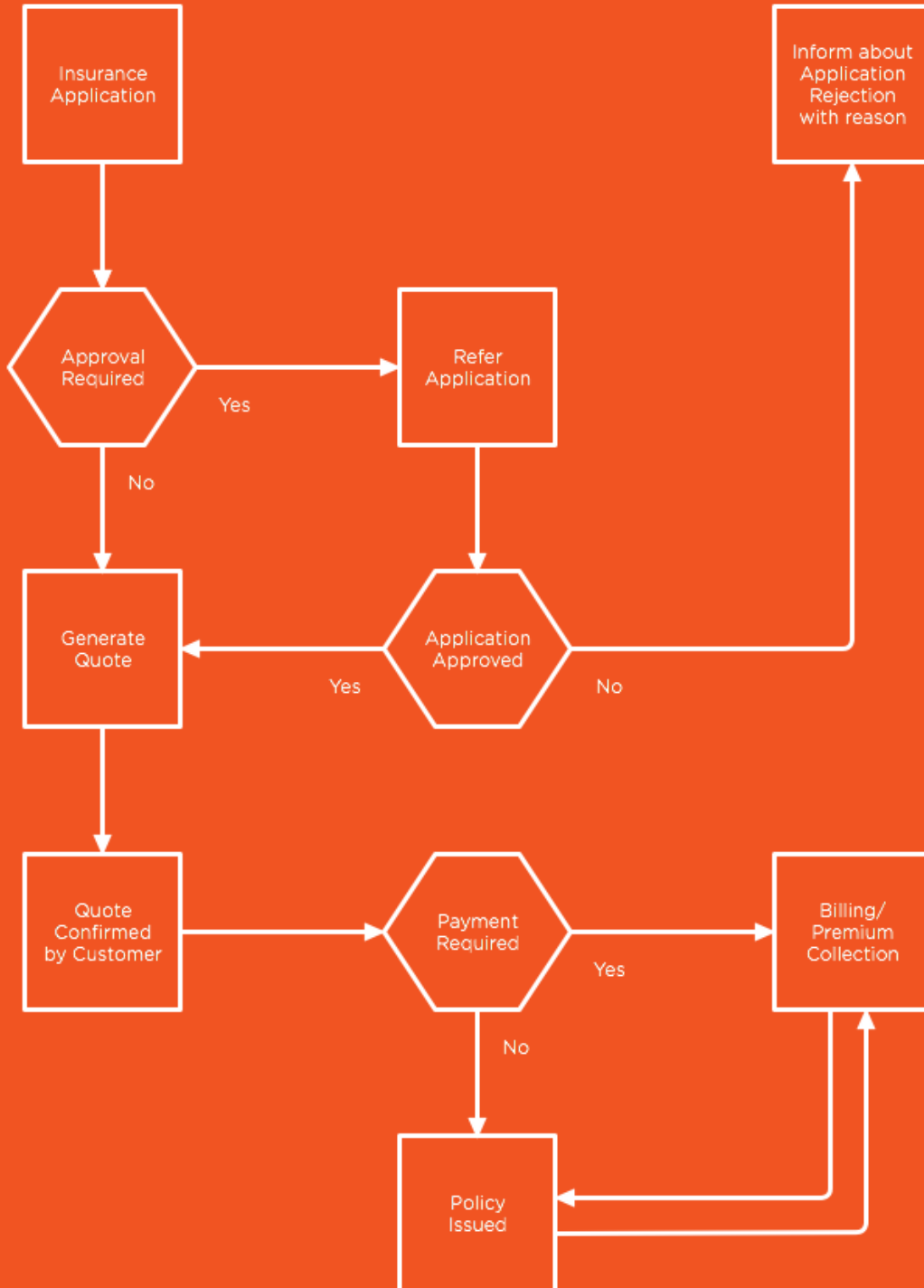


The Beyontec Suite is a fully developed, highly configurable, real-time, multi-line administration system for the property/casualty insurance industry. It implements quickly with secure, scalable web delivery. And it helps ensure statutory and regulatory compliance with fully dynamic calendar and diary functions.

Why do we bother to say it's fully developed? Because it is. We spent three years ensuring that before we brought it to market. We wanted to be sure it was as ready to meet your needs as it was to meet our expectations. Consequently, it contains all the functionality you need to administer any line of P&C business, in any market, with all of the necessary, attendant capabilities (policies, claims, billing, financial accounting, reporting, document management, and more).

With a powerful business rules engine and user-determined workflows (including load balancing and round-robin assignments), the Suite enhances processing and transactional speed with automated referrals and escalations.

It ensures the highest level of security and control by enabling multiple levels of approval within a workflow. And it gives detailed insights into operations — with email or text alerts for overdue or urgent tasks requiring immediate action — to identify and eliminate bottlenecks. The result is complete control over all attendant activities.



# Fully Configurable

How much control? So much that you can configure your workflows — and all attendant functions like Policy, Billing, and Claims Administration, Underwriting, Reinsurance, Financial Accounting, Reports, and Queries — to do the business you do the way you want to do it.

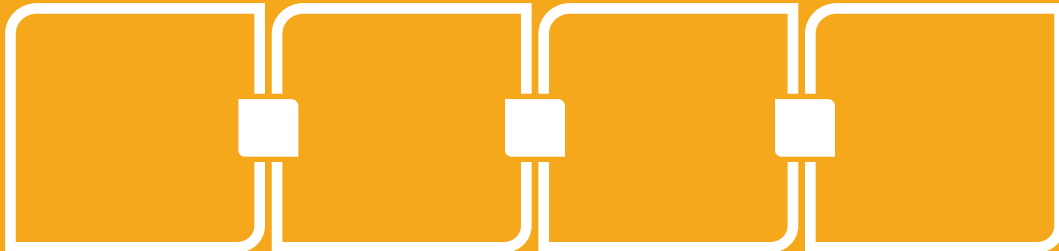
To give you all the independence and self-sufficiency you want, we built in a user-friendly dashboard (even the interface is configurable) to make sure you could configure the Beyontec Suite to meet any of your requirements, without the need for error-prone programming or IT intervention. You'll reduce time to market for new products, quickly add new states and new lines of business, and ensure regulatory compliance.



At the same time, you'll be able to:

- Provide controlled access to agents/brokers, policyholders, reinsurers, banks, lienholders, and corporate customers
- Add new employees or producers and control what they can see and what they can do
- Incorporate changes to premium rates for existing products
- Implement new policy documents and edit existing ones
- Add new fields or coverages to your existing products
- Add or modify a workflow or business rules
- Create new reports
- Import or export data to any format
- Integrate third-party APIs.

# Success By the Module



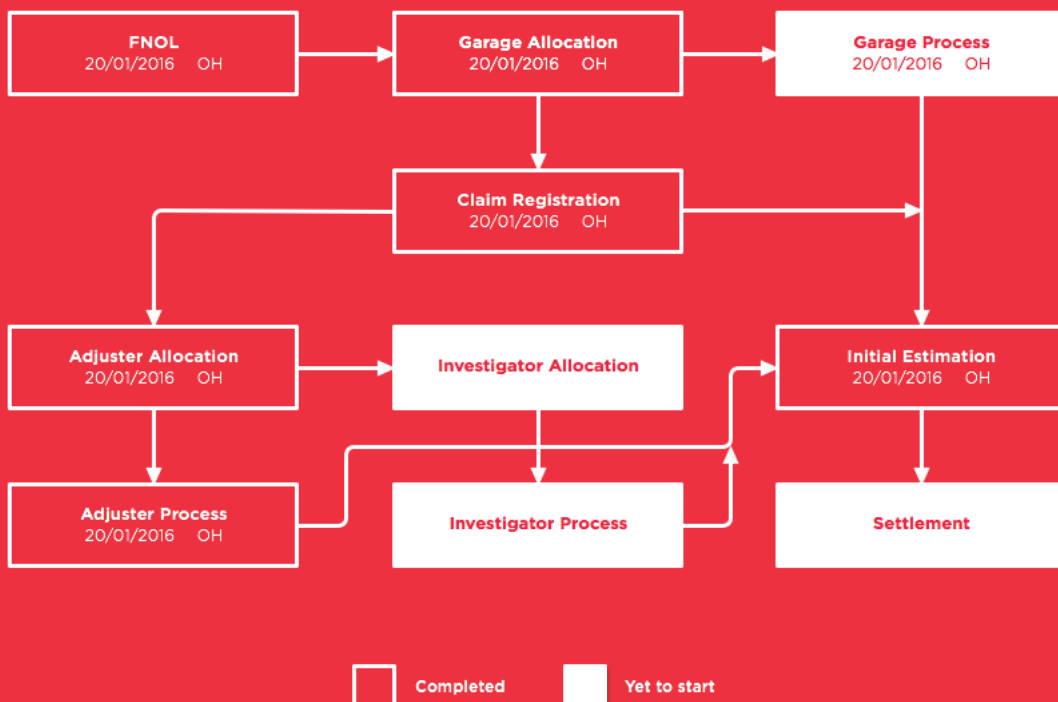
Whether you subscribe to the entire Suite — or opt to start with one module at a time — our SaaS model delivers what you want, when you want it. The modular functionality of the Suite includes:

## Policy Administration

With automated underwriting, driven by the powerful business rules engine, you can quickly respond to quotation requests from agents and policyholders. Configure workflows for new business, renewals, direct business, agent business, and more. The workbasket feature tracks new, pending, and backlog tasks and it lets you define response times for each process. You can perform what-if analyses for comparative quoting. You can track comments with the Diary and Notes feature. You can manage email communication and trigger alerts to ensure timely task completion. You can manage documents and images with integrated document management — and email and print documents on demand. You can create digital signatures on policy docs. And you can go to market with new products in a matter of weeks.

## Claims Administration

With minimal manual intervention and complete transparency, the questionnaire-based claims process and its automated response-driven workflows keep you on track and your policyholders updated. You'll improve customer satisfaction by managing turnaround times with an embedded Response Time tracker that triggers alerts for delays in workflow queues. You'll categorize claims as new, pending, and closed, while the "Spot Your Claim" feature lets you quickly identify status of any claim. You'll give real-time access to policyholders, repair facilities, reinsurers, and your finance department. You'll automatically create reserves, loss type, confirm coverage, and track statutory contact times. The notes and diary functions update claims histories and communicate details to policyholders, supervisors, producers, other adjusters, and underwriters. Integrated document management stores all claims-related documents. And the module automates salvage and subrogation processing.



## Reinsurance

With comprehensive risk evaluation and management functions, the Beyontec Suite provides the flexibility to gather data and create reports based on your requirements and treaties. It lets you send emails to various stakeholders, track task status, and store all risk-related documents. It automatically allocates policy premium to treaties with the option to change them. It gives real-time allocations to treaty participants. It sorts, lists, and searches risk accumulation by specific data. It automatically allocates XOL treaties for claims. It creates and adds coinsurance leader and follower policies, as well as facultative inward and outward policies. It automatically emails treaty participants for claims above defined limits. And it includes the option to create out-of-sequence endorsements for mid-term FAC participants.

## Billing and Collections

Let your policyholders pay their premiums the way they want to – by check, online, with cash, by credit card, by ACH, or with debited auto-pay. Let employees focus on exceptions, rather than routine policies, with automated invoice generation, collection, and check printing. The Suite lets you offer down payment before or after policy issuance and enable multiple payment plans for each product. It sends reminder emails for payments and invoices. It automates cancellations for non-payment and premium processing for renewals, matches receipts by statements of account for agents, and provides single-check processing for multiple claims payments.

## Portals

Let your constituents handle their own transactions to increase satisfaction while reducing your expenses, improving turnaround time, empowering them, and giving them complete transparency:

- The Agent Portal helps your agents generate quotes, issue policies, request endorsements, access policy and claim details, and process payments and other transactions.
- The Customer Portal lets your policyholders access and print policy-related documents (including ID cards for auto insurance or declaration pages for a lienholder), renew policies, request new quotations, retrieve endorsements, initiate claims, and pay premiums.
- The Reinsurer Portal lets your facultative partners access risk information, get real-time acceptance, and receive required reports.

## Ease of Use for All Lines

The Beyontec Suite is pre-programmed to accommodate specific markets and classes of property/casualty insurance for carriers, MGAs, and start-ups. And we've successfully installed it to administer:

1. Auto
2. Homeowners
3. Professional Liability
4. Specialty Lines
5. Surplus Lines
6. Fair Plans
7. Lawyer's Professional Liability, and more.



# Get it Right the First Time

Given our years of experience in the insurance industry, we developed the Beyontec Suite to incorporate all of the features and functionality insurers want – and to address all of the challenges insurers face. We tested it exhaustively. We created pricing options so smaller insurers could avail themselves of the same features and functionality as larger insurers. And we made sure our customers can scale it up, rather than having to scale it down to afford it.

## Claims Administration

- First Notice of Loss/Intimation
- Registration
- Payment & Expense Reserves
- Third Party
- Vendor Administration
- Recovery Administration
- Workflow Management
- Document Management
- Claims Accounting

## Underwriting

- Policy Administration
- Rating
- Web Portals
- Workflow Management
- Document Management
- Policy Accounting

## Reinsurance

- Facultative Reinsurance
- Coinsurance
- Treaty Reinsurance
- Reinsurance Accounting

## Reports and Queries

- Operational
- MIS
- Analytical

## Financial Accounting

- Accounts Receivable
- Accounts Payable
- General Ledger



**beyontec**<sup>®</sup>  
[www.beyontec.com](http://www.beyontec.com)

If you haven't seen the  
Beyontec Suite, you haven't  
found the right software.

Call us today. We'll be happy  
to give you demo any time  
you like.



4600 Fuller Drive, Suite 150  
Irving, Texas 75038

**Phone:** 940-294-8080

**Fax:** 940-294-8077

**Email:** [sales@beyontec.com](mailto:sales@beyontec.com)